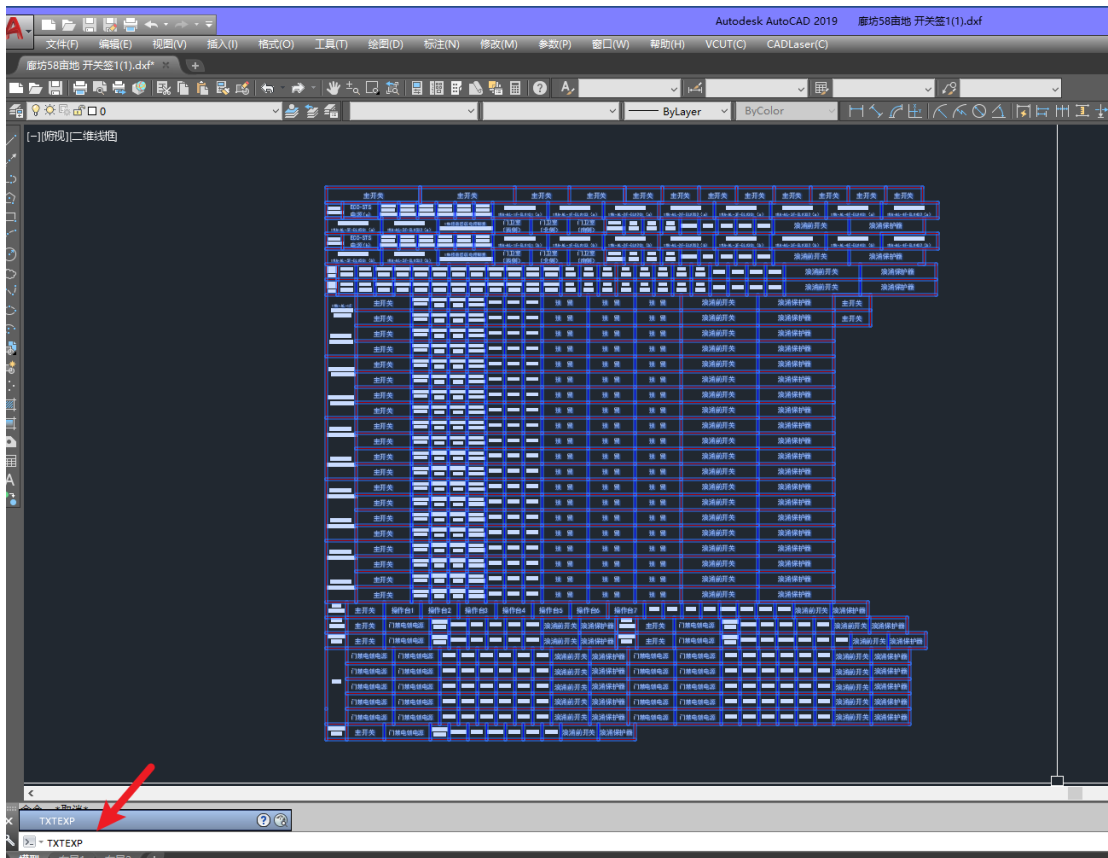


About the solution of AutoCAD text to curve

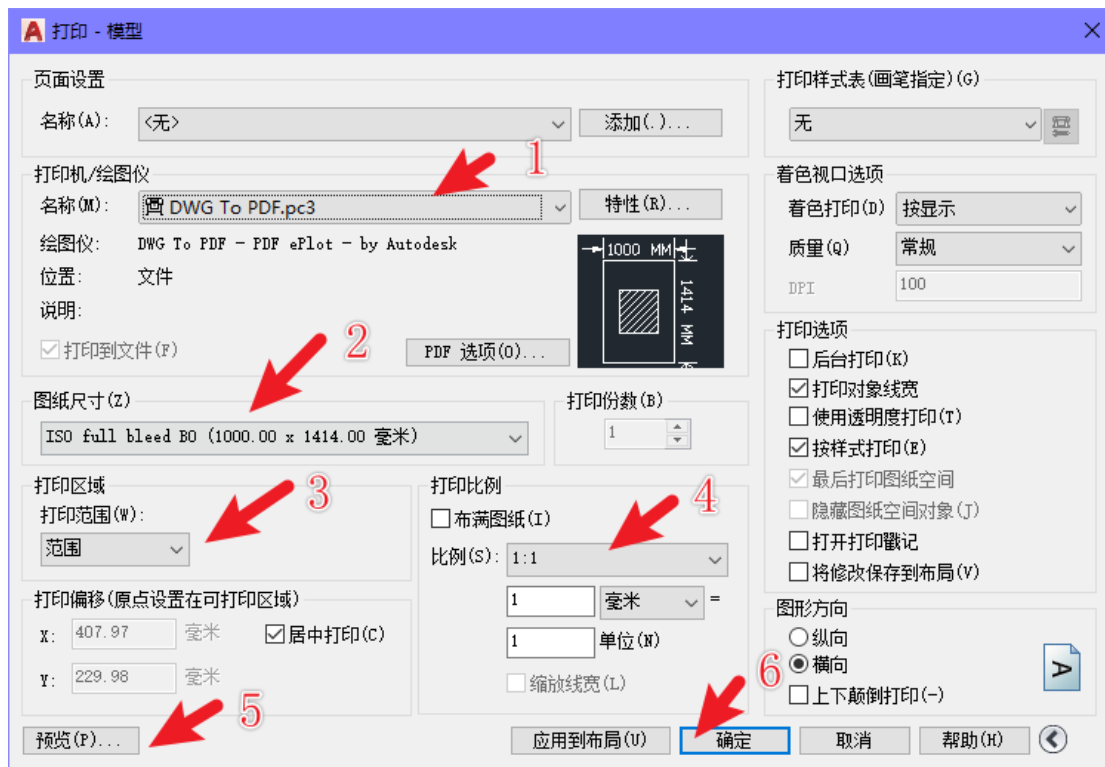
There are two solutions:

1. AutoCAD selects all the graphics, and then input TXTEXP in AutoCAD to convert the fonts to curves, but some of the fonts converted curves are not suitable and will generate multi-lines, but most of them can be used. Then save it as a document in AutoCAD2004/LT2004 DXF format, and then open it through AutoLaser.

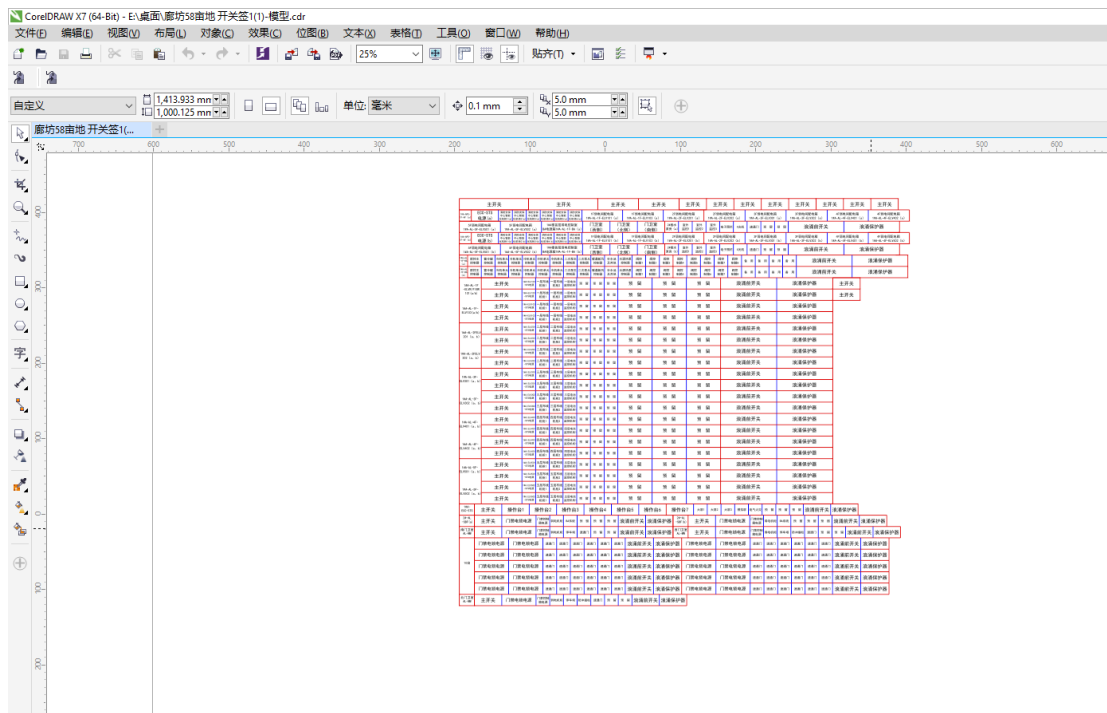
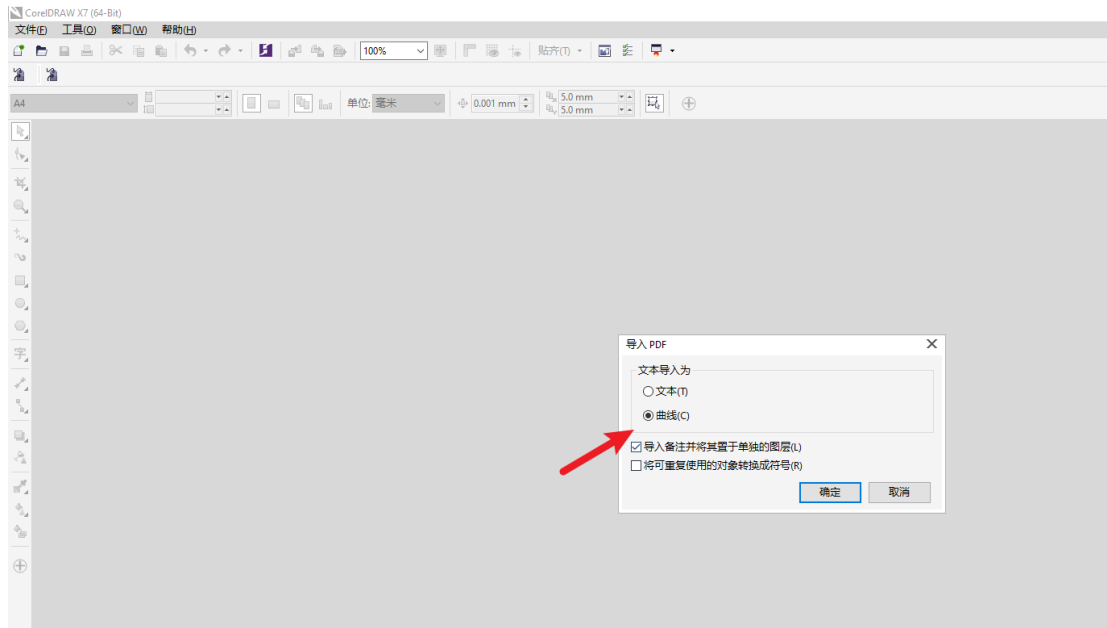


2. The second, in AutoCAD, click print, save as pdf, then open the pdf document through CorelDRAW, save it as an ai file, and finally open the ai file through AutoLaser. The specific steps are:

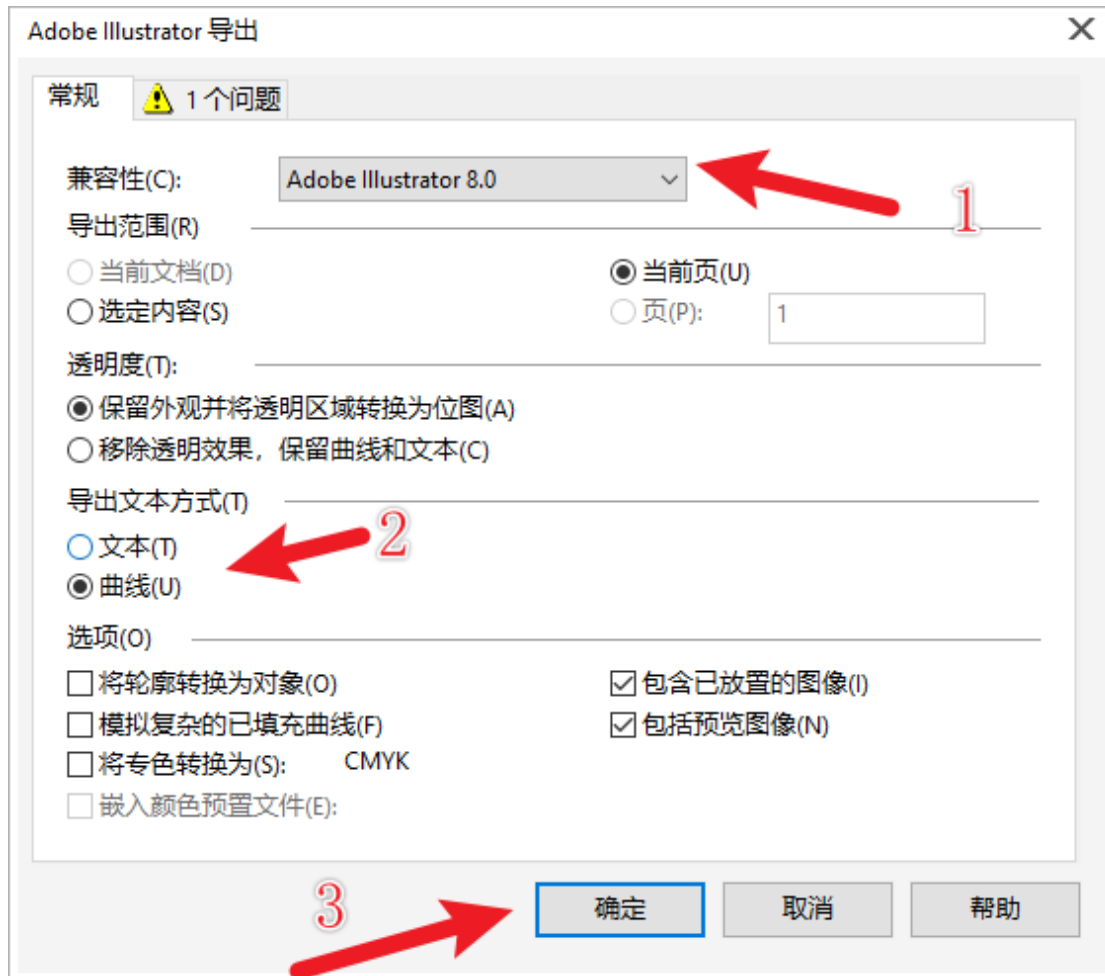
- 1) Click Print in AutoCAD. The print dialog box pops up. As shown below.名称: DWG To PDF.pc3。
- 2) Drawing size (ISO full bleed B0 (1000.00*1414.00 mm)), **note that the drawing size needs to be larger than the drawing, otherwise the display will not be complete.**
- 3) Print range selection, range.
- 4) Print ratio, select 1:1.
- 5) Preview
- 6) If the preview is correct, click OK to output the document.



7) Open pdf documents through CorelDRAW. Text import as curves.



8) In CorelDRAW, save the document as ai format, pay attention to select compatibility as Adobe Illustrator 8.0, export text as curve.



9) Open the converted ai document through AutoLaser, complete.

